

## TUB FEET INSTALLATION WITH BAR

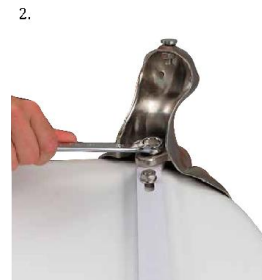
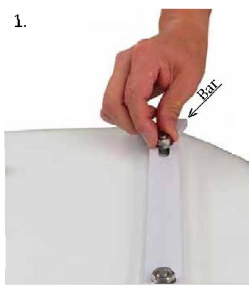
### Tools Needed

- 11/16 Wrench • 3/4" Wrench •

### Parts Included

- 2 Bars • 4 Mounting Bolts • 4 Flat Washers • 6 Locking Washers • 6 Nuts •

- A. Roll top tubs have the drain located at the end of the tub and tilt toward the drain so the two tallest feet must be attached on the end without the drain. The two shortest feet must be attached on the drain end.
- B. Double roll top and double slipper tubs have the drain located in the center of the tub so no tilt is necessary as the bottom is slanted toward the drain. All four feet should be the same.



1. Place tub upside down onto a soft cloth/blanket to prevent from damage.  
(Note: For roll top tub slide under rim 2X4 wooden block to elevate the tub from one side. This will help turn the tub over when finished)
2. Once the tub is turned upside down remove washers and nuts from the threaded studs.
3. Position mounting bars over the threaded studs on both ends.
4. After bars are in place thread a washer and nut onto each stud by hand. Do not tighten until foot is attached. **(Shown in image 1)**
5. Attach feet onto the bars using flat washer, locking washer and bolt. **(Shown in Image 2)**
6. Finish tightening the bars once the feet are attached securely  
**(DO NOT OVER TIGHTEN MAY CRACK THE TUB)**
7. Lift tub by the rim and turn onto its feet. If tub is not level use built-in adjuster under the foot. **DO NOT LIFT TUB BY FEET**

## TUB FEET INSTALLATION WITHOUT BAR

### Tools Needed

- 11/16 Wrench •

### Parts Included

- Rubber Shims(If Included) • 4 Dovetail Bolts • 4 Flat Washers • 4 Locking Washers • 4 Nuts •

For some tubs you will find letters inside your tub foot to correspond with letters on the bottom of your tub as a guide to foot placement. If these are not present on your tub use following as a general guide.

- A. Roll top tubs have the drain located at the end of the tub and tilt toward the drain so the two tallest feet must be attached on the end without the drain. The two shortest feet must be attached on the drain end.
- B. Double roll top and double slipper tubs have the drain located in the center of the tub so no tilt is necessary as the bottom is slanted toward the drain. All four feet should be the same.



1. Place tub upside down onto a soft cloth/blanket to prevent damage. (Note: For roll top tub slide under rim 2X4 wooden block to elevate the tub from one side. This will help turn the tub over when finished)
2. Once the tub is turned upside down slide a dovetail bolt into each mounting pod. **(Shown in image 1)**
3. Put foot onto the dovetail bolt. Secure foot by using locking washer and nut. (It is normal to have small gaps between foot and tub wall).
- 4 . Lift tub by the rim and turn onto its feet.
5. Loosen the bolts and let the tub settle into place on the feet. Tighten the bolts.
6. If tub is not level use built-in adjuster under each foot.  
**DO NOT LIFT TUB BY FEET**

## FREESTANDING ACRYLIC TUB INSTALLATION INSTRUCTIONS

### Tools Needed

- Screws or Liquid Nails • Wooden Blocks • Pencil •

**Be sure to re-inforce the floor before securing tub. We recommend 2- 2"x12"s securely fastened to floor beams where you plan to secure your tub.**

### Stabilize Tub to Prevent Sliding



1. Place tub in intended position on floor.
2. Use pencil to trace around tub on floor.
3. Move tub to the side to allow work space.
4. Place wooden blocks on floor **inside** traced pattern of tub. Blocks can be secured to floor using screws or liquid nails.
5. Put tub back into position over wooden blocks. Wooden blocks will not be visible and will prevent tub from sliding across floor.
6. Once the tub is position and secure, apply small bead of sealant around the base.

## CLAW FOOT ACRYLIC TUB INSTALLATION INSTRUCTIONS

### Tools Needed

- Wrench or socket • Drill & Bits •

### Parts Recommended

- 2-2"x12" boards • 4 Lag Bolts • 4 Flat Washers

**Be sure to re-inforce the floor before securing tub. We recommend 2- 2"x12" securely fastened to floor beams where you plan to secure your tub.**

### Anchor Tub to Floor

1. Place tub in intended position on floor.
2. Mark foot anchoring locations on floor with pencil.
3. Move tub to the side to allow work space.
4. Drill starter holes in floor.
5. Put tub back into position.
6. Place flat washers on lag bolts.
7. Put lag bolts through slot in bottom of foot and screw into floor using wrench or socket.



## **INSTALLATION INSTRUCTIONS**

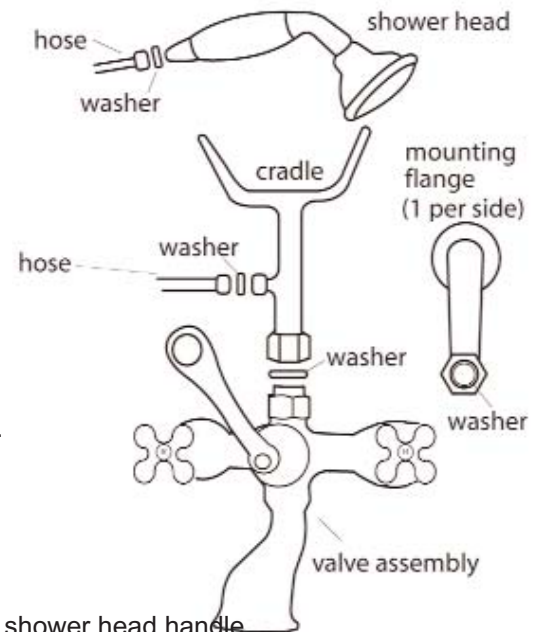
### **Tools Needed**

- Adjustable Wrench • Slip Joint Pliers • Pipe Putty or Teflon Pipe Tape •

**NOTE: Handles are identified HOT and COLD. The hot handle must be to the left and cold to the right. Be sure the water supply is turned off before starting installation. Cushion the wrench or slip joint pliers with an old cloth to protect the finish of the fixture.**

### **Shower Assembly & Tub Mount Instructions**

1. Align the valve assembly with the swivel mounts and secure with the nuts on the swivel mounts. Rubber washer must be in place. Tighten with a wrench.  
**Note:** Mounts may be positioned up or down depending how high you would like the spout placed and the hole spacing.
2. Apply teflon tape to both ends of the hot and cold supply nipples. Thread the tapered ends of the nipples into the swivel mounts on the outside of the tub. Thread the large locknuts and metal washers onto the other ends of the nipples and secure the shower set to the tub. Position the threaded hose outlet to the left or right.
3. Install a washer in the cradle nut and thread the cradle onto the valve assembly. Tighten with a wrench.
4. Install washers on the hose ends and attach the hose to the cradle and shower head handle. **DO NOT OVERTIGHTEN.**
5. Attach cold water supply pipe to cold water side of valve assembly. Same with hot on other side.



### **To Connect Shower Set to Tubes (NOT INCLUDED)**

1. First remove the round rubber washer from the end of each water supply tube and dispose of them.
2. Put the cone washers on the tub and connect the end of each water supply tube. Then slide the 1/2" connecting nuts over the opposite ends of the supply tubes and up to the cone washers.
3. Twist the connecting nuts over the cone washers and thread the nuts onto the nipples.
4. Connect the other ends of the water supply tubes to your house water lines. Consult your local plumber for assistance.

**NOTE: Please seek professional help if you have copper plumbing in your home.**

### **Cleaning Instructions**

Wipe this whole set off with warm water and a soft cloth. DO NOT use soaps, cleansers, or brass cleaners as they will disintegrate the protective lacquer coating and leave the brass exposed causing it to tarnish.

## **ASSEMBLY INSTRUCTIONS**

(These instructions are for assembly of bath supplies **ONLY** not for connection to water supply.)

### **Parts Included**

- Left Supply Tube • Right Supply Tube • 2- Shafts each connected to a Stop Valve • 14 Screws • 14 Anchors •
- 2 Connecting Nuts and 2 Flat Rubber Washers • 2 Flat Floor Flanges • 2 Wall Mounts • 2 Wall Support Tubes • 2 Tube Fasteners •

### **Tools Needed**

- Wrench • Pliers • Teflon Tape (use as a sealant on all male threaded tubing) •

**This water supply tube kit includes the parts listed above ONLY. The faucet in your bathtub should be purchased previously and separate from this kit. This should NOT be used with faucets that use shower risers and shower rods, or with leg tubs that have factory drilled holes.**



1. First be sure to shut off the the water supply. Remove old water supply tubing. Place a flat rubber washer onto the upper end of each supply tube.
2. Screw flat floor flange on to 5" shaft with stop valve attached. Be sure to leave enough thread to go through floor, to attach to your plumbing.
3. Screw flange back down till level with floor. Attach to floor with provided screws.
4. If rubber washers are inside connecting nuts remove them. Slide connecting nut over the thread end of the supply tubes and up over the fittings. So that the fittings are completely inside the connecting nuts. Place washers deep inside of connect nuts.
5. When fastening supply tube to wall mounts:
  - a. Attach wall mount flanges to the wall support tubes.
  - b. Attach tube fasteners to wall support tubes and tighten screws.
  - c. Decided where supports will be attached to the wall and fasten with provided screws. Use anchors if necessary.
  - d. Slide threaded end of top supply tube into tube fasteners.
6. Assemble supply tube into top of stop valve. Tighten screws on tube fastener.

### **Cleaning Instructions**

Wipe this whole set off with warm water and a soft cloth. DO NOT use soaps, cleansers, or brass cleaners as they will disintegrate the protective lacquer coating and leave the brass exposed causing it to tarnish.

**NOTE: The Gold Nuts are extra pieces for use with your plumbing. They are not necessarily needed for your installation. Please seek professional help if you have copper plumbing in your home.**

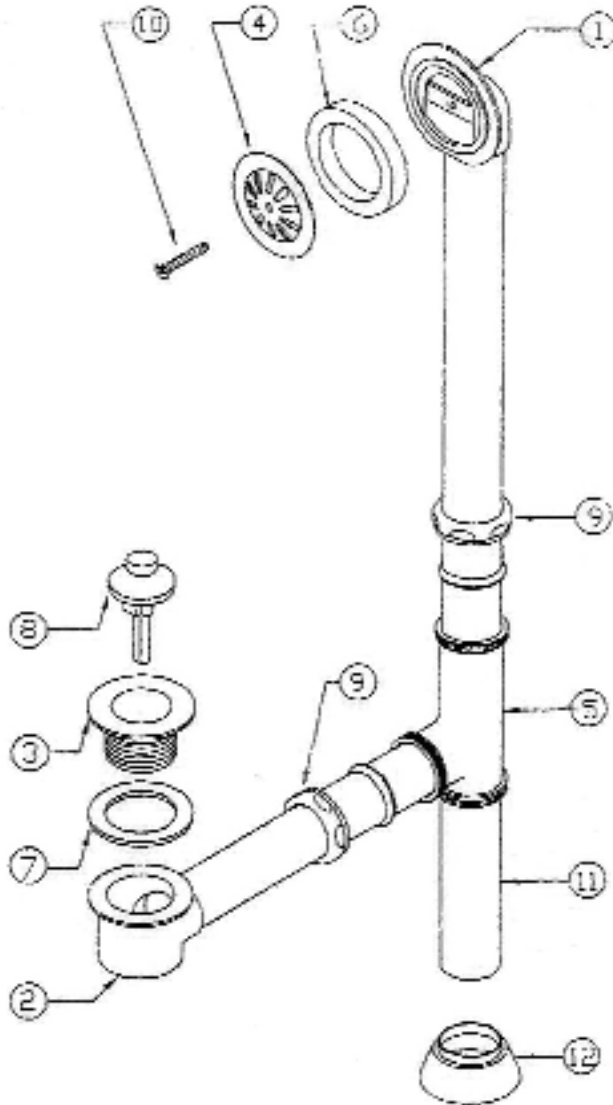
## INSTALLATION INSTRUCTIONS

### Parts Included

- Top Overflow Tube (1) • Bottom Shoe (2) • Top Waste Flange (3) • Face Plate (4) • Exposed Tee (5) •
- Face Sponge Gasket (6) • Waste Gasket (7) • Lift Stop (8) • 2- 1 1/2" Nut and Washers (9) • Face Plate Screw (10) •
- 1 1/2" x 6" Tube (11) • 1 1/2" O.D. Escutcheon (12) •

### Tools Needed

- Wrench • Pliers • Teflon Tape (use as a sealant on all male threaded tubing) • Tube Cutter • Plumbers Putty •



### To Assemble Tubes

1. Assemble #3 and #8 screw into #2. #7 is on top of #2 beneath the tub. Place a bead of plumbers putty around bottom of #3, to seal to tub and protect from leaks. Then tighten #3 into #2.
2. Assemble overflow. (Follow diagram)
3. Set #1 in place.
4. Place Tee (#5) on shoe.
5. Trim bottom of tube #1 to fit into Tee (#5).
6. Trim tube #11 to fit.
7. Tighten the nuts.

### Cleaning Instructions

Wipe this whole set off with warm water and a soft cloth. DO NOT use soaps, cleansers, or brass cleaners as they will disintegrate the protective lacquer coating and leave the brass exposed causing it to tarnish.

**NOTE: Please seek professional help if you have copper plumbing in your home.**