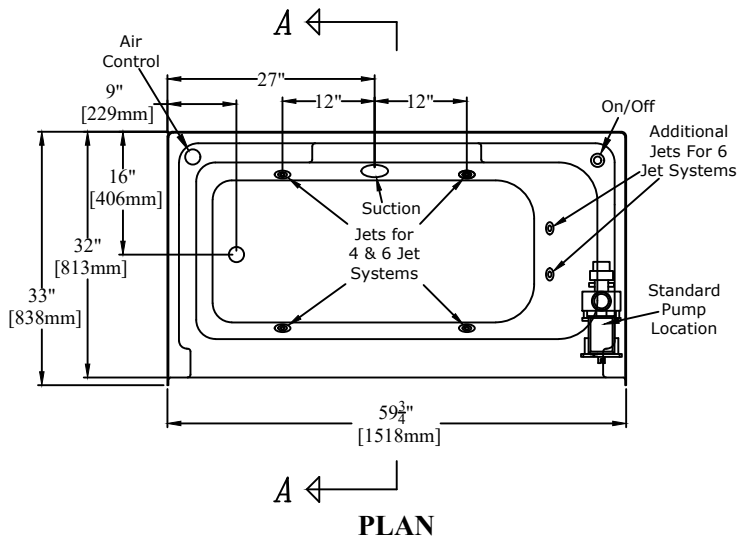
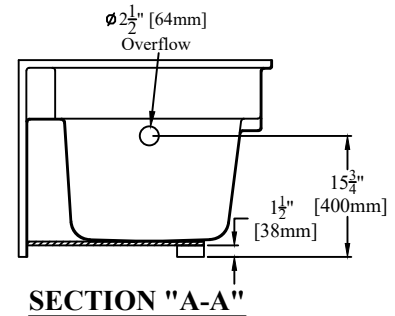


*** For clarity, ***
the whirlpool piping
has been omitted
from this drawing



*59 3/4" [1518mm] Bathtub
w/ Removable Access Panel & 4 or 6 Jet Whirlpool Package
Left Hand Version (RE6032LBA:4 or RE6032LBA:6) Shown*

PRODUCT SPECIFICATIONS:

- * Certified to meet CSA B45.5/IAPMO Z124 Standard.
- * Product has a Class B fire rating as determined by ASTM E-84 test method.
- * Removable access panel.
- * Reinforced & slip resistant floor.
- * Integral 1" [25mm] nailing flange.
- * Factory drilled 2 1/2" [64mm] overflow.
- * Bathwell Dimensions (At Top): W-52 1/2" [1334mm]
D-23" [584mm]
H-16 1/4" [413mm]
- * Bathwell Dimensions (At Bottom): W-42" [1067mm]
D-18 3/4" [476mm]
- * Bathwell Capacity (At Overflow): 45 Gal [170L]
- * Water Level (At Overflow): 12 3/4" [324mm]
- * This unit is available without a removable access panel.
(Model RE6032LB:4, RE6032LB:6, RE6032RB:4 or RE6032RB:6)
- * All dimensions +/- 1/2" [12.8mm]
- * Clarion Bathware reserves the right to change design and/or dimensions.
- * Dimensions are the same for RE, MP, and all other versions of this model.

RE6032LBA:4, RE6032LBA:6, RE6032RBA:4, or RE6032RBA:6 59 3/4" [1518mm] Bathtub w/ Left or Right Hand Drain, 4 or 6 Jet Whirlpool Package, & Removable Access Panel

Clarion
BATHWARE
44 Amsler Ave.
Shippensburg, PA 16254

Phone: (814) 226-5374
Toll Free: (800) 576-9228
Fax: (814) 226-0730
www.clarionbathware.com

Signatures For Approval:

Customer: _____

Arch./Engr: _____

Quote #: _____

Job Name: _____

Date: _____

Dwg. #
RE6032LBA or RBA
-4&6 JETCUT

Dwg. By: CAL
DATE: 5/4/2021

*** IMPORTANT NOTICE ***

Clarion Bathware reserves the right to change the design and/or dimensions of its products at any time. This drawing may have been updated since this publication was issued. Before placing an order for any product, refer to our website at www.clarionbathware.com to obtain the most current drawings for any products that you wish to purchase. Compare the date of revision of the drawing that you have with the one on the drawing on our website. If you do not have internet access, please call your sales representative or Clarion Bathware's sales department at 1-800-576-9228.